

Data in the cloud in 2 minutes

STM – Azure (Microsoft)

By: *Enrico Marinoni* - AVNET-SILICA Italy
This presentation is on Internet [here](#).

AVNET[®]SILICA



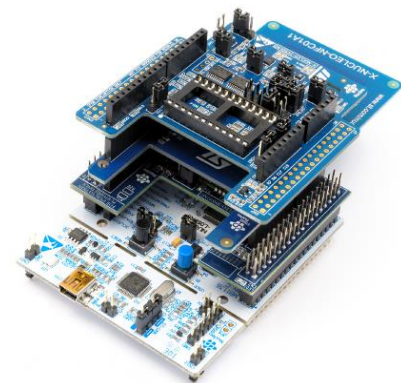
Summary

IoT

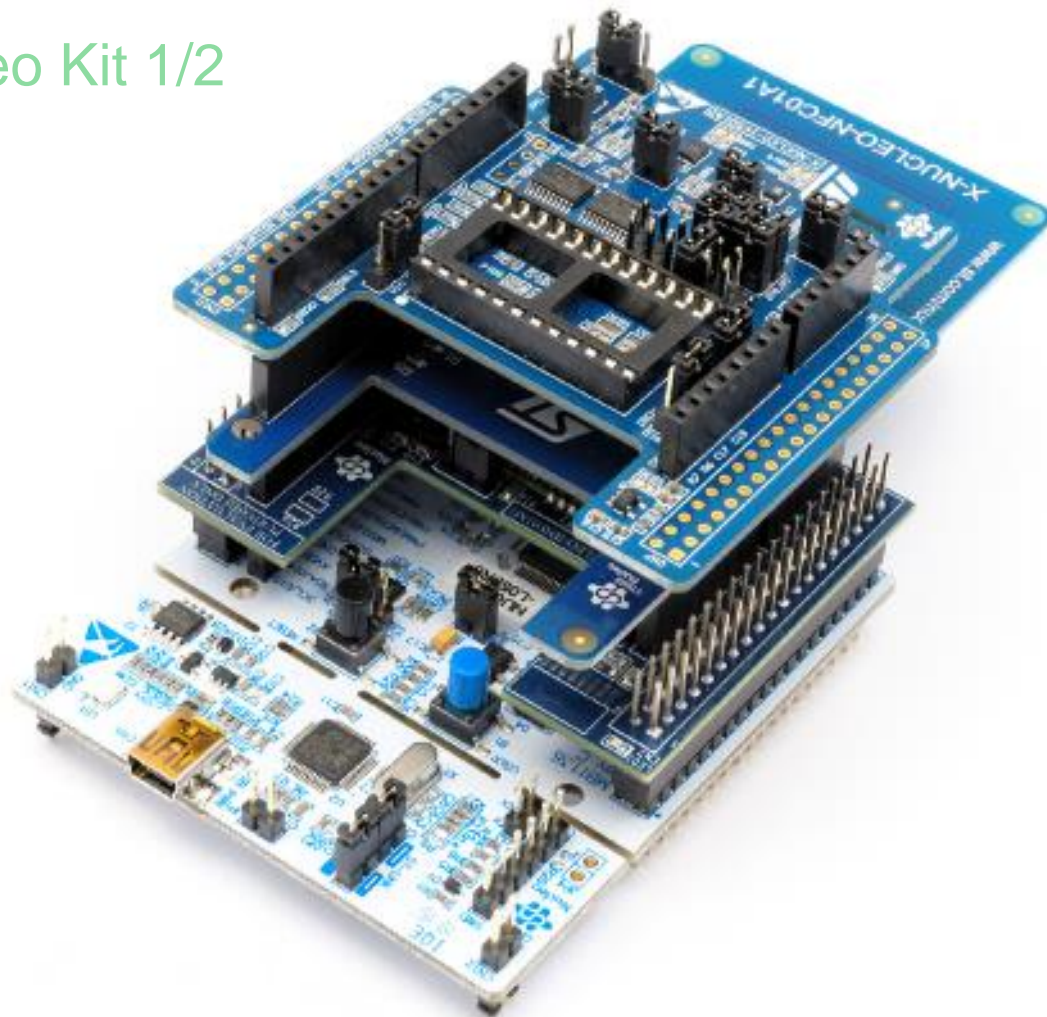


Content Nucleo Kit 1/2

- [NUCLEO-L476RG](#) Nucleo-64 development board based on STM32L476RG MCU ([L4 series](#)), support Arduino UNO R3 & ST Morpho Connectivity
- **X-NUCLEO-IDW01M1** WiFi Expansion Board based on SWPF01SA module (**Attention**, this module is obsoleted, new AVNET-SILICA WiFi module available soon)
- [X-NUCLEO-IKS01A2](#) 3D accelerometer and 3D gyroscope (**LSM6DSL**), **LSM303AGR** 3D accelerometer and 3D magnetometer, **HTS221** humidity and temperature sensor and **LPS22HB** pressure sensor
- [X-NUCLEO-NFC01A1](#) dynamic NFC tag expansion board based on M24SR
- [FP-CLD-AZURE1](#) FW package



Content Nucleo Kit 1/2



WWW.EMCU.EU



How to use the kit



- Connect the kit to the PC
- Start [Tera Term](#) and configure it as shown in the next page (choose a right serial port)
- Reset the kit, press **black button**
- **Within 3 sec**, press the **blue button** to change the WiFi configuration
- To change the WiFi configuration, on Tera Term, press **y** and **enter**
- Enter **SSID**, the name of the WiFi hotspot that you want to use (ie: MyFastWeb)
- Enter the **Password** of your WiFi hotspot
- Enter the encryption mode, select **2**
At this point the new configuration is saved on the kit
- **Read the QR code** (present in the sheet attached to the kit) to connect to Azure, we suggest to use the APP named: [QR & Barcode Scanner](#)
- Register and you get the link (by email) for open (using a browser) the datas send to Azure from the kit

- We suggest to use your smartpone and the function:
ROUTER WiFi and Tethering -> Router WiFi



Tera Term configuration

Tera Term: Serial port setup

Port: COM5

Speed: 115200

Data: 8 bit

Parity: none

Stop bits: 1 bit

Flow control: none

Transmit delay: 10 msec/char 0 msec/line

OK Cancel Help

Tera Term: Terminal setup

Terminal size: 80 x 64

Term size = win size

Auto window resize

New-line: Receive: CR Transmit: CR

Terminal ID: VT100

Local echo

Answerback: Auto switch (VT<->TEK)

Coding (receive): UTF-8 Coding (transmit): UTF-8

locale: american CodePage: 65001

OK Cancel Help



SW & HW note

The sw: [FP-CLD-AZURE1](#)

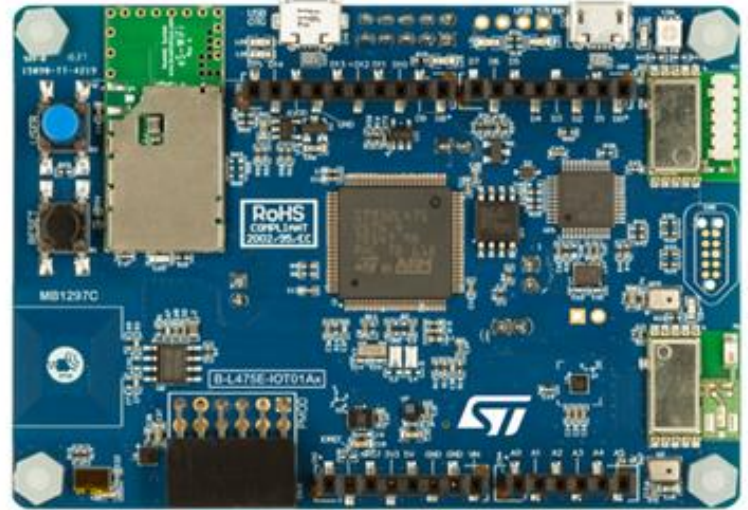
contain MQTT, TLS, SSL, etc.

SOFTWARE IS PROVIDED “AS IS” see the [SLA](#)

STM for MQTT, TLS, SSL, etc, suggest to use the: [wolfSSL](#) library

This example is available of course for [AZURE](#) (Microsoft) but also for [AWS](#) (Amazon) and [WATSON](#) (IBM).

This STM official examples are ready to use on the board [B-L475E-IOT01A](#) that mount the **Inventek** WiFi module.





Thank you!